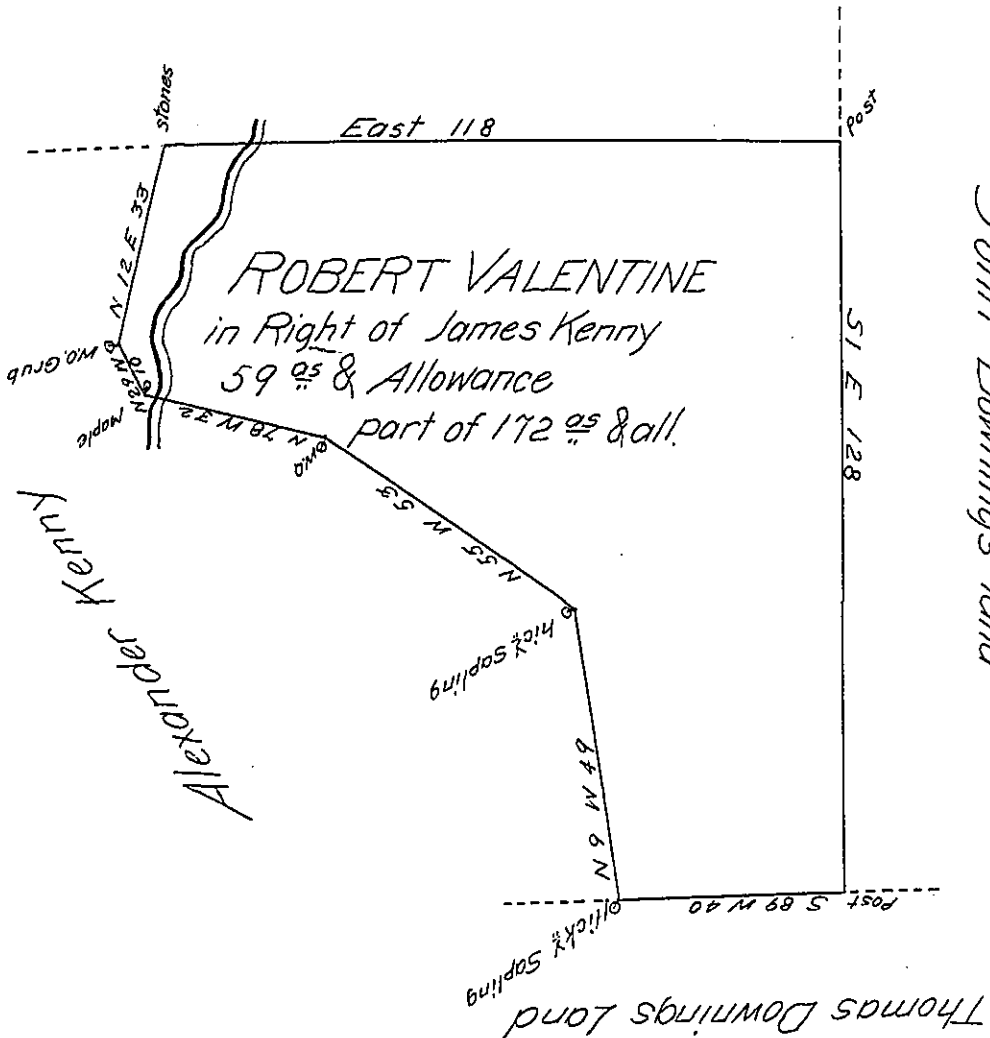


Thomas Wilson's Land



The Draught of a Tract of land Situate in East Caln Township in the County of Chester Surveyed to Robert Valentine in right of James Kenny by Warrant from the Proprietaries dated the ~~25<sup>th</sup>~~ day of ~~August~~ <sup>July</sup> 1751 Surveyed the 11<sup>th</sup> day of the 4 Month 1752 by Benja. Lightfoot

The above is part of 172<sup>ac</sup> surv<sup>d</sup> on the above Warrant. A Copy of the above draft &c. in the hand writing of the said Benjamin Lightfoot was lately received by the hand of George Massey, and having examined the Same I believe <sup>they</sup> ~~the same~~ may be depended upon.

March 7<sup>th</sup> 1808.

Ja Hindman D.S.

To Samuel Cochran Esq }  
Surveyor General }

IN TESTIMONY that the above is a copy of the original remaining on file in the Department of Internal Affairs of Pennsylvania, made conformably to an Act of Assembly approved the 16th day of February, 1833, I have hereunto set my Hand and caused the Seal of said Department to be affixed at Harrisburg, this twentysixth day of June 1905

*Isaac R. Brown*  
Secretary of Internal Affairs.